



# VOICE OF THE ILWU



Volume 59 • No. 4

The VOICE of the ILWU—Published by Local 142, International Longshore & Warehouse Union

July/August 2019

## Statewide Foodland Caucus prepares for negotiations



Members at the caucus Front L-R: Emmanuel Baltazar (Maui Business Agent), Annie Dickinson, Chair (#27 Pupukeya), James Villegas (#19 Mililani), Sierra Delgado (#24 Pukalani), Dona Hamabata (#8 Kaneohe), Anabel Cardenas (#18 Dillingham), Ruby Shimabukuro (#1 Market City), Jaslyn Laurito (#8 Kaneohe), Cindy Carvalho (#38 Waimea), Local President Donna Domingo. Back L-R: Jason Vallejo (#43 Kapolei), Kapono Keliikoa (#37 Kailua), Lee-Ann Decosta (#1 Market City); Dillon Hullinger (Oahu Business Agent); Lori Kikuyama (#19 Mililani); Roselyn Molina (Big Island Business Agent); Deedra Ferreira (#41 Keeau).

HONOLULU — Foodland is one of the biggest employers of our members in the ILWU and is the largest locally-operated super market chain in Hawaii. They employ over 800 of our members.

There are 36 different locations across the state. Thirteen rank-and-file members spent July 18-19, 2019 at the Oahu ILWU Hall to discuss and finalize their demands and proposals for contract negotiations with the company coming up in the fall.

### A range of responsibilities

In addition to doing their regular Foodland jobs (anything from bunching your green onions in grocery to processing stock in the

warehouses in receiving), these members volunteer their time to do union business like this.

Before an old contract expires, union members at the company are asked for their input and ideas on what to change in the contract.

These members form the negotiating committee, and most of them have been meeting regularly since as early as April to streamline their ideas.

### A democratic process

The members in attendance represented different locations across the state to ensure the discussions would address a broad variety of workers' concerns so as not to overlook anyone when



it comes to putting together a set of demands that reflects the whole. This is a big part of ILWU democracy, and a good reason to show up to your unit's union meetings: your participation can directly influence the contract.

Mahalo to these members who understand that working together creates a stronger union, and that a stronger union means stronger contracts that benefit their fellow workers. If you have questions about how to get involved at your unit, see the back page for how to get in touch!



Front L-R: Jazmin Kanani Numata from Longshore, Rob Ashton (ILWU Canada President), Darian Agan (Unit 3515 Halele'a Spa) and Rhonda Morris (Unit 3511 Grand Hyatt) from Kauai, Jennifer Yadao (Hawaii Division Business Agent), Local Vice President Corinna Nguyen, Roselyn Molina (Hawaii Division Business Agent), Jennifer Kaaihue (Maui Longshore). Back: Corin Kekua (Oahu Division Representative) and Jasmine Young-Gusman (Unit 4420 Straub Clinic) from Oahu at a march for solidarity with workers at a local Canadian credit union.

VANCOUVER — This year's SIUW (Summer Institute for Union Women) was held from July 2-6, 2019 at the University of British Columbia.

This week-long institute is exclusively for women. This year the Local sent a delegation of nine women representing nearly all the divisions.

The Local makes it a point to send women to this every year if possible because one cannot ignore the fact that gender inequality affects every aspect of life, including labor.

Their topics of study included classes on Collective Bargaining, Leadership, Humanity and Social

## Upcoming Statewide Sports

66th Annual Golf Tournament on Maui August 31-September 1, 2019

34th Annual Slow-Pitch Softball Tournament on Oahu October 12, 2019

Justice, and Organizing.

They put theory to practice on one of their last days in a march in support of workers who were on strike at a credit union.

The credit union company recently decided to cut pensions off as a benefit for all new hires. The pension of the current workers would not be affected, yet the current workers felt the need to protest on behalf of the new hires anyway.

Unions often say the phrase: "An Injury to One is an Injury to All." When people make the choice to walk the talk like this, they embody principles that will outlast any injustice.

The next Local Executive Board (LEB) meeting is scheduled to start at 9:00 a.m. on September 20, 2019, in Honolulu at the ILWU building on 451 Atkinson Drive. ILWU members are welcome to attend as observers.

ADDRESS LABEL



## News from the Dispatcher

# ILWU Canada honors the 84th anniversary of the Battle of Ballantyne Pier

On June 18th, over 40 ILWU members, pensioners, and supporters gathered at the Ballantyne memorial at New Brighton Park in Vancouver, BC to commemorate the 84th anniversary of the Battle of Ballantyne Pier and remember the militant history of Vancouver waterfront workers.

## Recognizing the First Nations

Joulene Parent from Local 500 opened the event by acknowledging that the event was held on the unceded land of the Squamish, Musqueam, and Tsleil-Waututh peoples.

“We make this recognition at all of our labor events because it is not just history, it is also about moving forward,” Parent said.

## Kill a Worker, Go to Jail

ILWU Canada’s Second Vice President, Dan Kask served as the master of ceremonies. He drew attention to the recent 61st anniversary of the collapse of the Iron Workers Memorial Bridge which could be seen just across the river. Nineteen workers died during the accident.

Kask then pointed out the banner behind the podium featuring ILWU Canada’s *Kill a Worker, Go to Jail* campaign. “The purpose of the campaign is to bring awareness to the short-comings of Industrial manslaughter laws in Canada and the lack of enforcement of those laws,” Kask said.

The crowd observed a moment of silence for the workers killed in the bridge collapse and for two ILWU members, Everett Cummings and Don Jantz who were killed on the waterfront in the past year.

“Today means a lot for our union,” said ILWU Canada President Rob Ashton. “It means we are alive and can continue to fight on. Those four letters, ILWU, have given generations of our people something to live for. And as we know in the past, it has been the reason why some people have died—not because they wanted to, but because they stood up for the ILWU. When we stand up for this great union, it means we stand up for the rest of the labor movement. We know what happens when you let your guard down if you relax from the fight—governments, police, and corporations will try and steamroll you even harder and faster. The only

way we defend ourselves is with our strength and our solidarity.”

## The Battle of Ballantyne Pier

Dave Lomas, Pensioner from ILWU Local 500, who has extensively researched the history of the battle, gave a detailed story of the Battle of Ballantyne.

Ballantyne Pier was the site of a pitched battle between 1,000 locked out dockworkers and police in Vancouver, British Columbia, on June 18th, 1935. The Battle of Ballantyne was a part of the long history of militant trade unionism by Canadian longshore workers and ultimately laid the foundation for the formation of ILWU Canada.

After a decade of successful organizing and strikes by the International Longshoremen’s Association (ILA), the employers broke the back of the ILA during a 1923 strike and replaced it with a company union, the Vancouver and District Waterfront Workers’ Association (VDWWA). Workers eventually overcame this tactic by electing their leaders and forcing the union to address their interests and not the employers.

In 1935 The Shipping Federation provoked another major strike in the spring of 1935 and locked out workers at the port at Powell River.

The conflict spread to other dockers in the region. Vancouver longshore workers were also locked out after they refused to unload ships coming from Powell River. Seattle longshore workers, in an act of solidarity, refused to unload ships coming from Vancouver and Powell River that were loaded by non-union workers.

On June 18th, approximately 1,000 longshore workers and supporters marched through Vancouver towards Ballantyne Pier where non-union workers were unloading ships. The workers were blocked at the pier by hundreds of armed police officers. The dockers came under attack from the police and Mounties. Workers were beaten with clubs as they tried to run to safety, while many others tried fighting back, using makeshift weapons. Police attacked the union hall with tear gas where the women’s Auxiliary had set up a first aid station. Several people were hospitalized during the three-hour battle, including a worker who had been



Three generations honor Ballantyne struggle: from left to right, Skip Anderson (Local 514), Ricky Anderson (Local 500), Brock Anderson (Local 502), and Brian Anderson (Local 514).

shot in the back of his legs.

The battle was a tactical defeat for the longshore workers, but they continued the struggle to form a union independent of the Shipping Federation, and in 1937 ILWU Canada was born.

## Enduring lessons

The 2019 line-up featured several speakers who highlighted the enduring lessons of the Battle of Ballantyne Pier and the dockworkers struggle of that era.

“It’s a bloody reminder that the rights we enjoy today are the result of tangible sacrifices made by working people,” said President Laird Cronk of the Vancouver Federation of Labor. “The themes of bad faith bargaining, union-busting, and employee intimidation—these are not just challenges of the past.”

“Battle of Ballantyne speaks to the struggle that we go through every day, every time we bargain a collective agreement—in 1935 we saw what a conspiracy between the employer and government coming together to undermine workers looks like,” said Graeme Johnston President of the BC Ferry & Marine Workers Union. “We workers continue to fight in the streets, in the board rooms, in their union halls, to build power and fight back against the employer and to get the rights that they deserve.”

## History lesson

President Stephen von Sychowski of the Vancouver & District Labour Council reminded the crowd that future victories are sometimes built on the lessons learned in defeats.

“Change could be delayed, but it couldn’t be stopped because longshore workers continued to fight and ultimately the demands of 1935 were achieved, and the ILWU grew to become one of the largest and strongest unions in our Province,” von Sychowski said.

This theme is echoed in the musical, *The Battle of Ballantyne Pier*, according to director Sherry MacDonald. “Lecture speaks to the mind, but drama speaks to the heart. In *The Battle of Ballantyne Pier*, you will see every day, average characters fall and get back up again and eventually become stronger for it and this is the story of unionism on the waterfront,” she said.

Local 400 member and member of the Young Workers Committee, Kyle Knapton said the key lesson of 1935 was rank-and-file participation in our unions. “What can we take away from this? The only chance we have against the attempts to undermine our rights as workers is to actively participate in our unions,” Knapton said. “The youth need to step forward and get involved at meetings, in committees attend events and continue to fight for our rights that our predecessors gave their lives for.”



# Get to know your officers: Local Titled Officers

The top executive officers of ILWU Local 142 are the President, the Vice President, and the Secretary-Treasurer.

In addition to their individual duties, the officers work collectively as a three-person team called the "Titled Officers." Together they direct and coordinate the work of the union and all other officers. They work out of the Honolulu Office.

Democratic to its core, the vast majority of ILWU Local 142's officials -- Titled Officers, Business Agents, Division and Local Representatives -- are voted in by the members instead of appointed internally. These officers are elected every three years. This triennium started from January 2, 2019 and will last through January 1, 2021.

All of them started off as rank-and-file members just like you! Get to know more of them in the following pages.



**DONNA DOMINGO**  
Local 142 President

Donna first became a member of the ILWU when she was hired at the Aston Maui Lu Resort in 1981. She became a lead front desk agent in 1995. She served her unit as steward, secretary-treasurer, vice chair and chair. She also served as a Trustee on the Local Executive Board.

She ran for the seat of Vice President in 2003 and after serving three terms she ran for President, a seat she has been re-elected to since 2012.



**CORINNA NGUYEN**  
Local 142 Vice President

Corinna hails from the Big Island. She got her start in the ILWU in 1979 when she was hired at Punalu'u Blacksands Restaurant as a server.

Two years from that, she worked at Hawaiian Macadamia Nut Services LLC Ka'u as a tractor operator. She served her unit as treasurer, editor and secretary. She was elected as a Hawaii Division Business Agent in 2006 until 2018. Corinna was elected Local Vice President in 2018.



**BRIAN TANAKA**  
Local 142 Secretary-Treasurer

Brian became an ILWU member when he started working for the Hawaii Newspaper Agency in 1978 as a district manager. Brian served as unit chair, vice chair, and steward from 1978 to 1993.

Brian also served on the International and Local Executive Boards from 1993 to 1997. He was first elected as a Business Agent in 1994 and was elected until 2018. Brian was elected Local Secretary-Treasurer in 2018.

## Maui Division holds unit editor training

KAHULUI — On August 21, 2019, Maui Division held a unit bulletin training for eight members who stepped up to be unit editors.

### Knowledge is power

Since the ILWU Local 142 is the most democratic union in the state, and perhaps even the nation (see further pages for more of the officials elected by members), education is important.

After all, how can one make good decisions if they are not fully informed?

This is why the ILWU has a strong education program in place: to empower the rank-and-file to make informed decisions about how they want to run their union.

In the ILWU everything is up for vote by the rank-and-file. Choices ranging from who is on the negotiating committee, changes

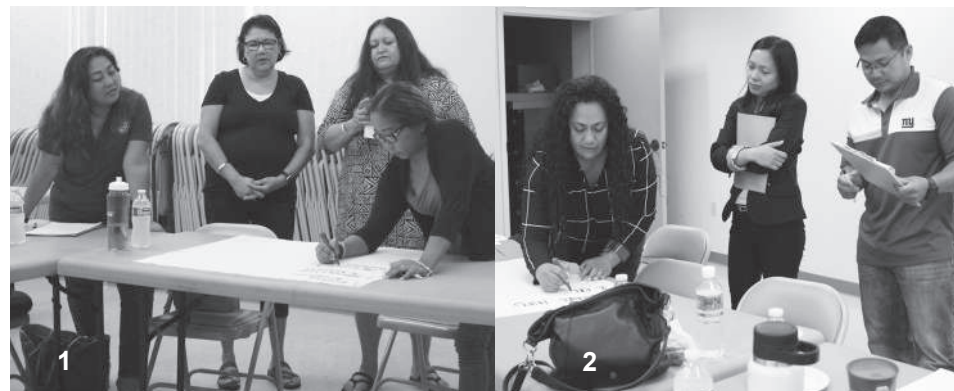
in the contract, and who are the top leaders in the organization are decided democratically in elections.

### What is a unit editor?

A unit editor, like many other leadership positions within a unit, is a voluntary role. They plan, write, lay out and print a bulletin that reports on concerns within the unit, and solutions and facts that can help members resolve conflicts and strengthen the union.

"I want to be a mover and shaker for the union," said new editor Stephanie Smythe from Unit 2501 Royal Lahaina Resort, when asked why she volunteered to be an editor.

The day-long training helped the editors get familiar with each other so they can be in touch as they find their footing as leaders in the union.



1) L-R: Myla Onellion, Stephanie Smythe, Charlene Kehe, Cindy Milla. 2) L-R: Seini Dennis, Arianne Joyce Impelido, John Palpallatoc.

### Future looks bright for new editors

The training noted that a substantial amount of ILWU's leaders of today, as well as yesterday, were all award-winning ILWU unit bulletin editors. In this issue you will see that current Local Vice President Corinna Nguyen was one, as was current Oahu Division Director Michael Yamaguchi, among others!

They say a journey of a thousand miles starts with a single step.

Whether the members in attendance go on to run for higher office within the union or create

ripple effects within their unit that will be felt for years to come, we commend these new editors who came forward to fill an important education role:

Venancio Garduque Unit 2526 Andaz Maui at Wailea; Seini Dennis Unit 2505 Westin Maui; Cindy Milla Unit 2527 Kaanapali Alii; Charlene Kehe Unit 2516 Hyatt Regency Maui; Myla Onellion Unit 2520 Grand Wailea Resort; John Palpallatoc Unit 2520; Stephanie Smith Unit 2501 Royal Lahaina Resort; Arianne Joyce Impelido Unit 2508 Foodland.



# HAWAII LONGSHORE DIVISION

It is no exaggeration to say that Hawaii could not function without the work on and near the waterfront. Our brothers and sisters in the Longshore Division have a history in the ILWU defined by exemplary moments of strikes and solidarity.

The Longshore Division services members statewide as a part of ILWU Local 142, but operates more independently under special provisions of the ILWU Local 142 Constitution. You can reach the division at 808-949-4161.



**WILLIAM "BABA" HAOLE, IV**  
Division Director

Baba was hired in 1988 at McCabe, Hamilton & Renny. He currently works as a longshoreman at Matson Terminals. Baba has served as overall vice chair and Unit 4201 Chair.



**RICHARD KAMOË**  
Vice Division Director

Richard started his membership with the ILWU in 1994 when he was hired by McCabe, Hamilton & Renny. He served his unit as Vice Chair from 2008-2013. He now works for Matson.



**DRAKE DELAFORCE**  
Secretary-Treasurer

Drake has been an ILWU member for 15 years. His membership began when he was hired by Unit 4201 Matson/McCabe as a machine operator.

He was elected to his unit to serve as an Executive Board member and unit secretary. This is the second term he has been elected to Secretary-Treasurer for the Division.

"Education is key," says Delaforce. "Know what a union is and remember the value of the contract and what has come before you."

## Appointed for this term



**FRED ROBINS**  
Business Agent

Fred is from McCabe, Hamilton & Renny. His unit hired him 15 years ago as a winchman. He served his unit as an Executive Board member and Trustee. Fred was appointed this year to serve as Business Agent.



**DENNIS MORTON**  
Business Agent

Dennis was originally a firefighter before he became a longshoreman. He has been with Hawaii Stevedores, Inc. since 2001. He served as a Unit Executive Board member, and was first elected Business Agent in 2009.



**TYRONE TAHARA**  
Business Agent

Tyrone was hired in 1987 by McCabe, Hamilton & Renny as a ship gang laborer. In 1991, he was promoted to Heavy Equipment Operator.

He served as a shop steward and editor. He has worked as a Business Agent since 1991 for Oahu Division, then for the Hawaii Longshore Division after 2009. He has managed to not be jaded after all that time and says, "I'm still learning every day about new challenges occurring in the industry. What I learn, I want to pass it over to the younger generation." He recommends the film "Eye of the Storm" for anyone who has a desire to learn more about the union.

DEMOCRACY



MATTERS

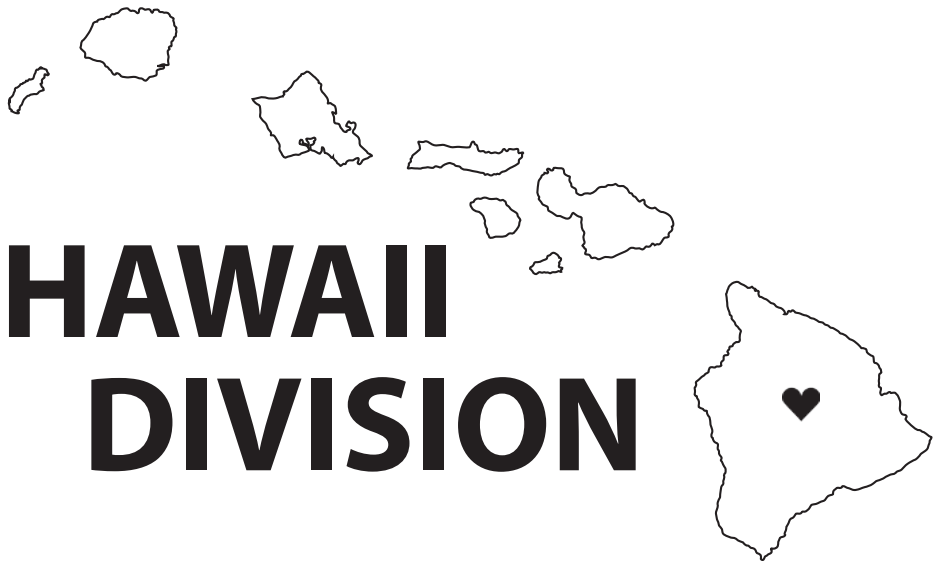
**Elected by the membership:**

- HAOLE
- KAMOË
- DELAFORCE
- MORTON
- TAHARA

**The next issue (September/October VOICE) will include information on who else was elected for the 2019 - 2021 triennium...**

- IEB board members,
- LEB Trustees,
- LEB industrial reps,
- and more!

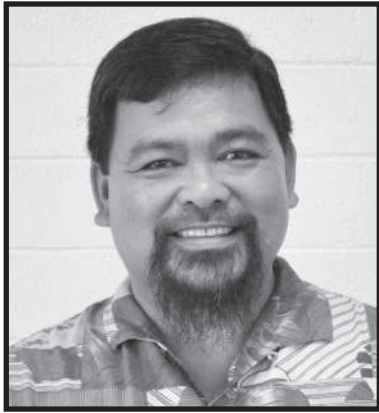




Hawaii Division's main union hall is in Hilo at 100 West Lanikaula Street. There is also a smaller Kona office at 74-5565 Luhia Street Kaiwi Square.

Elmer Gorospe, Jennifer Yadao and George Martin work out of the Hilo office and can usually be reached there at 808-935-3727. Michael Dela Cruz, Roselyn Molina, and Tristie Licoan work out of the Kona office and can be reached at 808-329-2070.

The Hawaii Division Executive Board meets monthly at 6:00 pm. Contact their offices for specific times and locations!



**ELMER GOROSPE**  
Division Director

Elmer became an ILWU member in 1994 when he was hired by the Mauna Loa Macadamia Nut Corporation as a power plant operator. He served as Unit Treasurer from 2001 to 2003. He was elected as a Business Agent in 2004 to 2011. He was first elected Division Director in 2012.



**MICHAEL DELA CRUZ**  
Business Agent

Michael's membership with the ILWU began in 2000 at the Hilton Waikoloa Village. He worked there as a bell captain/supervisor. His active participation in union life - serving as a Shop Steward and Vice Chair - led him to being appointed as a temporary Business Agent in 2014.

From then on, he was elected to Business Agent. He wanted to continue his time as Business Agent because he believes that "being bilingual is a gift [that] can help the Filipino working community."



**TRISTIE LICOAN**  
Business Agent

Tristie's membership in the ILWU started in 2002 when she was hired at Mauna Kea Beach Hotel as a Cook IV. She served her unit as a Shop Steward in 2009, as Vice Chair from 2010 to 2014, Chair from 2014 to 2017.

In those later years, Tristie simultaneously joined the Business Agent shadow program (2015 to 2016). She was appointed as a full time Business Agent in 2017.

Tristie also worked at another ILWU unit, the Fairmont Orchid from 2006 to 2013 as a Cook III to a Cook II. She firmly believes that "there is never an 'I' mentality; it's always a 'we' or 'us' when it comes to membership."

**Appointed for this term**



**JENNIFER YADAO**  
Business Agent

Jennifer has been a member for nine years. She was a full-time cashier at #41 Foodland Keaau. This is her first term as an appointed Business Agent

As an active member served her unit in various roles: Unit Secretary, Unit Chair, Unit Editor, and served on the balloting committee. "As a BA I would like to encourage members to be more active," said Yadao. "Take the time to read and know your contract so you won't be intimidated of management. If we cannot speak up, how are we going to resolve or change things?"



**GEORGE MARTIN**  
Business Agent

George first became an ILWU member at Yamada & Sons, Inc, then at the Hamakua Sugar Company where he served as a Shop Steward and Unit Chair.

When the sugar company closed, George was re-hired at Yamada & Sons, Inc, in 1994 as a mechanic, where he also served as Unit Chair and Shop Steward. George was elected Business Agent from 2006 to present.



**ROSELYN MOLINA**  
Business Agent

Roselyn is in her first term as a Business Agent and has been a member for 20 years. She ran for this position "to fight for the rights of our everyday rank and file and to protect workers' rights as the union did for my family."

She became a member when she started work at the Sheraton Kona Resort & Spa as a PBX/Front Desk Agent. She served her unit as a Chair, Vice-Chair, Steward, Negotiating Committee member and Editor.

DEMOCRACY  
 MATTERS

**Elected by the membership:**

GOROSPE  
 DELA CRUZ  
 LICOAN  
 MARTIN  
 MOLINA



The VOICE of the ILWU (ISSN 0505-8791) is published every two months by Hawaii International Longshore & Warehouse Union, 451 Atkinson Drive, Honolulu, Hawaii 96814. Periodicals postage paid at the post office of Honolulu, Hawaii.

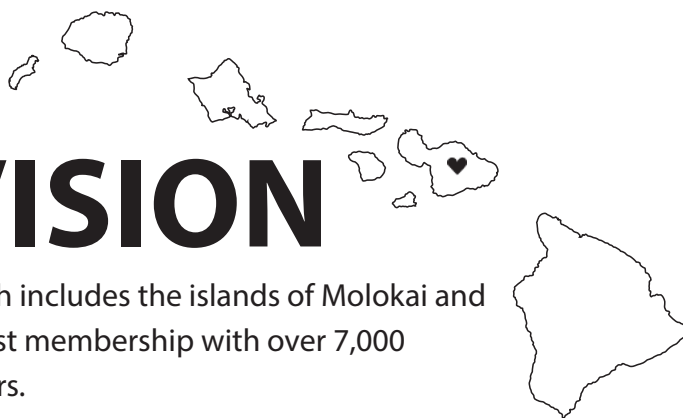
POSTMASTER: Send address changes to VOICE of the ILWU, c/o ILWU Local 142, 451 Atkinson Drive, Honolulu, HI 96814. Editorial Board: Donna Domingo. Editor: Mie U. Omori; mie.omori@ilwulocal142.org



**ROBERTO "BOBBY" ANDRION, JR.,**  
Division Director

Bobby was hired at the Hawaiian Commercial & Sugar Company (HC&S) in 1985 as a machinist apprentice, and worked his way up to becoming a machine specialist. He served as a Unit Steward and was part of the Local 142 organizing program. He was an organizer from 1989 to 2000. Bobby was elected Business Agent in 2003 and held that position through 2018.

# MAUI DIVISION



Maui Division, which includes the islands of Molokai and Lanai, holds the largest membership with over 7,000 of our 18,000 members.

A large portion of Maui's membership used to come from sugar. Sugar did not last as a viable industry for Hawaii's economy, and the state's last sugar plantation, Maui's Hawaiian Commercial & Sugar Company (HC&S), closed in 2016.

Now, most of Maui's ILWU members work in the tourism industry. The Grand Wailea Resort is the largest employer, followed by Hyatt Maui and the Westin Maui.

The Maui Division main office is in Wailuku at 896 Lower Main Street. The Division also has an office in Lahaina at 840 Wainee St. Unit H4 & H5 and on Lanai at 840 Ilima Avenue.

Maui holds their Division Executive Board meeting at 6 PM on the third Wednesday every month at the ILWU Hall at 896 Lower Main Street. If you have any questions about their meetings or other concerns, the division can be reached at 808-244-9191.



**STEVEN LEE**  
Business Agent

Steven was appointed Maui Division Representative in 2014 and elected Business Agent in 2018. He became a member in 2005 when he started work at the Hyatt Regency Maui as an engineer. Steven brings great knowledge and experience to his servicing of hotel units on Maui.

## DEMOCRACY



**JOE AQUINO**  
Business Agent

Joe was first elected to the role of Business Agent in 2015. He comes from HC&S where he worked as a welder and served his unit as Editor. His motivation comes from "wanting to making sure workers are being treated fairly for the work they do."



**EMMANUEL "MANNY" BALTAZAR**  
Business Agent

This is Manny's first term as Business Agent. He ran this past year because he wanted to "encourage every member, especially the younger ones to get involved and participate." He served his unit, Grand Wailea, as Unit Chair and was also PAC Chair for Maui Division. Manny took advantage of many educational opportunities the union provides such as Labor Institutes, Conventions and steward training classes.



**JERRYBETH "JB" DEMELLO**  
Business Agent

JB was hired at the Maui Surf Hotel (now the Westin Maui) in 1973 as a Culinary Cook II. She was Unit Chair from 1987 to 1991. She was elected as a Business Agent in 1991 and has served til the present.



**TEDDY ESPELETA**  
Business Agent

Teddy was hired at Maui Pineapple Company at Haliimaile in 1983. He served as Unit Steward in 1988, Vice Chair in 1991 and Unit Chair from 1994 to 2003. He was elected as a business agent in 2003 until 2012. He was elected Local Vice President in 2012.

## Elected by the membership:

- ANDRION
- AQUINO
- BALTAZAR
- DEMELLO
- ESPELETA
- LEE

## Appointed for this term



**CYRUS KODANI**  
Division Representative

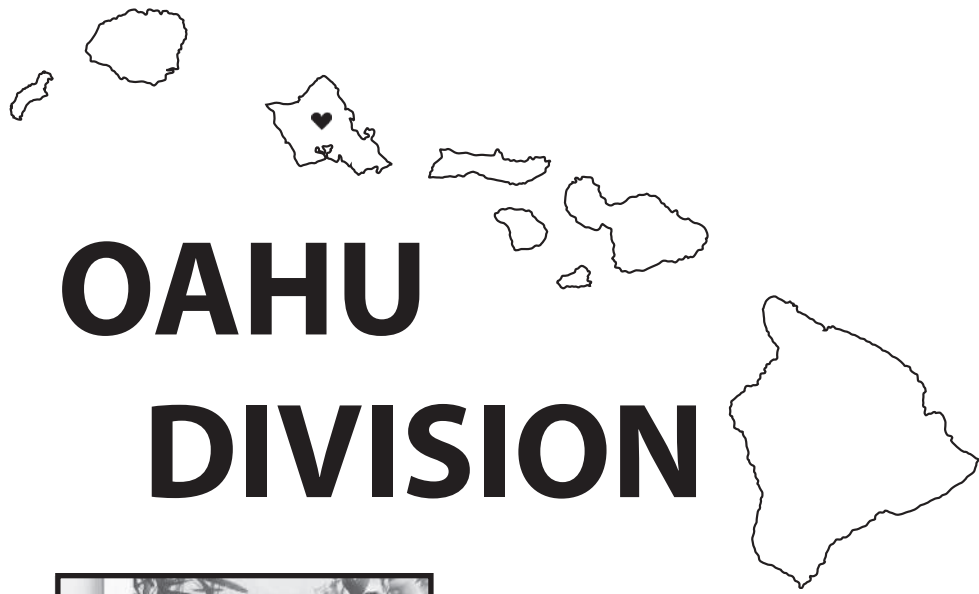
Cyrus was appointed to the role of Division Rep. this year based on his past service to the Union. He was hired at the Hyatt Regency Maui Resort and Spa in 1980 as a banquet porter. He served as Unit Chair of the Hyatt Regency Maui from 2006 and on the International Executive Board and Local Executive Board from 2009 to 2012.



**CHARLES ANDRION**  
Local Representative

Charles worked at HC&S for nine years as an instrument technician journeyman and served his unit as Unit Chair. After HC&S closed, he found employment with the Grand Wailea where he worked as a 2nd class maintenance engineer. In his two years there, he served as a Steward.





**MICHAEL YAMAGUCHI**  
Division Director

Michael became an ILWU member at the Hawaii Newspaper Agency in 1996 where he worked as a merchandiser. From 1998 to 2003, he served his fellow workers in different roles such as Unit Secretary, a Steward, and as Unit Editor.

He served as an Oahu Division representative and Business Agent from 2004 to 2012. Michael was elected Division Director in 2012. "I can't do this alone," said Yamaguchi. "I wanted and still want employers to respect and treat workers fairly."

DEMOCRACY



MATTERS

**Elected by the membership:**

**YAMAGUCHI**

**CHANG**

**FERNANDEZ**

**HULLINGER**

**MIRAMONTES**



**WILFRED CHANG**  
Business Agent

Wilfred's membership with the ILWU started when he was hired at Waikele Country Club in 2006 as an irrigation specialist. He served as Unit Chair from 2007 to 2011. He was first elected as Business Agent in 2012.



**PARIS FERNANDEZ**  
Business Agent

Paris was hired by Honolulu Ford in 1997 as a mechanic. He was actively involved in the union and served his unit as a Secretary and by being a part of the Negotiating Committee from 2008 to 2010.

After that, he served as unit Vice Chair and on the Negotiating Committee from 2010 to 2012. He was first elected to the role of Business Agent in 2012.



**DILLON HULLINGER**  
Business Agent

Dillon was hired at Foodland Super Market in 1989 as a courtesy clerk and worked his way up to a fulltime produce clerk.

He served as Unit Vice Chair from 1997 to 1999. Dillon also served on the Local Executive Board from 2000 to 2011.

Dillon was appointed Business Agent in 2011 and was elected to the position in 2012.



**JOSE MIRAMONTES**  
Business Agent

Jose was hired at Hawaii Logistics in 1997 as a selector. He served the unit as a Shop Steward from 2003 to 2004 then as Second Vice Chair from 2004 to 2012. He started working for Oahu Division in 2012 as a temporary Division Representative and has been elected to Business Agent for the 2019-2021 triennium.

## Appointed for this term



**DURAL DUENAS**  
Business Agent

Dural was appointed to be a Business Agent this year. He served his unit - Servco, where he worked as a lead technician - as a Unit Secretary and part of the Negotiating Committee.

Dural has been with the company for 13 years and is excited to be part of the Oahu Division where he hopes to "serve the membership by devoting time, energy and concentration with diligence."



**CORIN KEKUA**  
Division Representative

Corin comes to us from the Honolulu Star Advertiser, where she worked for 18 years as a mailer. For the past three years, she served her unit as a Steward, as Unit Chair, and on the Negotiating Committee.

"I was appointed," said Kekua. "But I wanted to become an officer because I wanted to help my fellow members fight for their rights...I am the first woman to be an officer on Oahu and I'm hoping I'm not the last!"

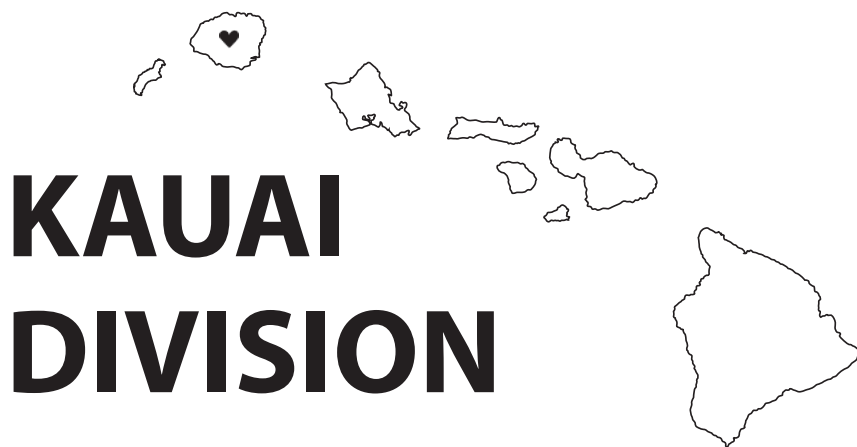


**PAMELA GREEN**  
Division Director

Pamela got her start in the ILWU in 1980 as a Foodland Waipouli cashier. Pamela was elected as Local Trustee in 2003, and served as Unit Chair until 2004.

She served on both the International Executive Board and Local Executive Board in 2004. She was elected business agent from 2004 through 2012. In 2015, she ran for Division Director and has held that position ever since.

She first ran for office "to serve the members, to provide a voice for those who can't speak, and to fight for those who can't fight."



# KAUAI DIVISION

Kauai is the smallest geographical division in Local 142 with about 2,000 members. Small but mighty, more than half of their members work in the tourism industry. The Grand Hyatt Kauai is the largest employer of ILWU members, followed by Princeville Resort, then Wilcox Memorial Hospital and units such as Kauai Coffee Company.

Their office is located in Lihue at 4154 Hardy Street. The Kauai Division Executive Board Meeting starts at 5 PM on the second Wednesday of the month at the ILWU Hall in Lihue. If you have any questions or want to confirm the meeting times, you can reach Kauai Division at 808-245-3374.



**CALVIN CORPUZ**  
Business Agent

Calvin has been a member of the ILWU for over 40 years. He worked at every Foodland Super Market on Kauai, including Waipouli, Princeville, and the original store in Lihue.

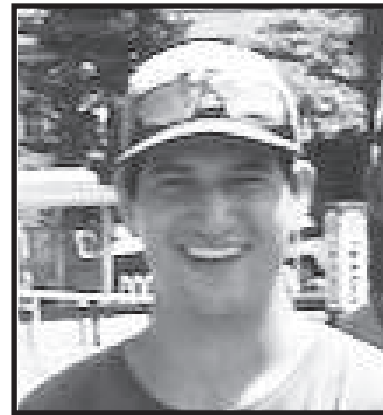
He served his unit as a Steward, Vice Chair, and Division Balloting Committee member. He was appointed to serve as Division Representative in 2013. He has been elected to the role of Business Agent since 2015.



**CHAD PACHECO**  
Business Agent

Chad first joined the ILWU twelve years ago as a member from Princeville Resort. He worked there as a Baker I, and served his unit as Vice Chair, Chair. He has attended two Local Conventions, one International Convention, and went to the last Labor Institute to further learn how to carry out its values. He is a third generation ILWU member and was elected to this term as a Business Agent after being previously appointed in 2015.

## Appointed for this term



**DAVIN "KAI" LOPEZ**  
Division Representative

Davin first joined the ILWU when he was hired by the Princeville Resort in 2012. He worked there as a Baker II.

He went to a steward training class this past March, and from there he started shadowing the other Division Business Agents. He was appointed to Division Representative in July of this year.

### DEMOCRACY



### MATTERS

**Elected by the membership:**

**GREEN  
CORPUZ  
PACHECO**

Coming soon...

**The next issue (September/October VOICE) will include information on who else was elected for the 2019 - 2021 triennium...**

- IEB board members,
- LEB Trustees,
- LEB industrial reps,
- and more!

**Questions? Get in touch! Call anytime Monday-Friday 8 AM - 4 PM!**

**HAWAII DIVISION**  
Hilo Office  
100 West Lanikaula St.  
Hilo, HI 96720  
Phone: (808) 935-3727

**MAUI DIVISION**  
Wailuku Office  
896 Lower Main St.  
Wailuku, HI 96793  
Phone: (808) 244-9191

**KAUAI DIVISION**  
Kauai Division Office  
4154 Hardy St.  
Lihue, HI 96766  
Phone: (808) 245-3374

**Kona Office**  
Kaiwi Square  
74-5565 Luhia St. C5  
Kailua-Kona, HI 96740  
Phone: (808) 329-2070

**OAHU DIVISION**  
Oahu Division Office  
451 Atkinson Drive  
Honolulu, HI 96814  
Phone: (808) 949-4161

**HI LONGSHORE DIVISION**  
Longshore Division Office  
451 Atkinson Drive  
Honolulu, HI 96814  
Phone: (808) 949-4161